



Quarterly Newsletter

Vol 009

April 1, 2026

At I-58, we live in awe...not because God can do it (we already know He can), but because He actually does. Over and over again, He shows up...meeting needs, making a way, and loving people in ways we never could have imagined. Lately, we've seen His hand so clearly.

Karhina's CORNER

Our garden has doubled in size and is already producing beautiful, fresh greens that will help feed families in our community. What a gift.

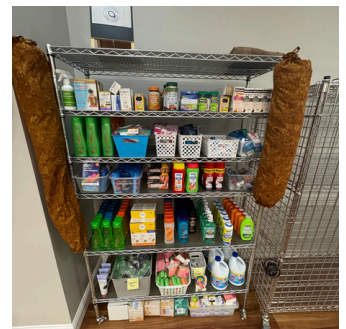


Southside Church generously purchased a bus for us, allowing us to reach people right here in our community who may not have transportation. Now, we can bring them in where they'll not only receive food and clothing, but also hear about the love of Jesus. Thank you Central Christian School for offering the bus to us at such an incredible price.

The Hearn Landscape team (Dan and Sam) blessed us with 17 new parking spaces and laid three pallets of beautiful sod, creating a more welcoming and accessible space for everyone we serve.

And Southern Lawn Design has stepped in as the sponsor of our Dignity Shelf, helping ensure that every person who walks through our doors has access to essentials like toothpaste, deodorant, and other personal care items.

We are so grateful. God is moving, and it's through the generosity and obedience of His people that lives are being changed every single day.



YTD Distribution Through March 2026

52,034 lbs of Food
5,262 Clothing Items
1,702 Home Goods
534 Baby Items
11 beds

Our **FINANCIALS**

We are so grateful for the team at Journals & Ledgers and all the work they put in to prepare the 2025 giving letters. Their diligence and care helped ensure everything was handled with excellence, and we truly appreciate their support.

As we move forward, we are working diligently to create a new budget that reflects where we are and where God is leading us next. At the same time, we are prayerfully seeking the perfect fit for our new treasurer...someone who will continue the legacy of good stewardship that has come before them.

Looking **FORWARD**



Not too long ago, One Church came and cleared roughly 30 trees, making room for what's next. And now, Lakeshore Engineering is stepping in to pour a 20x30 slab...completely as a gift. How amazing is that!

We are creating an outdoor area to build real community and serve our people well...whether it's grill outs on Thursdays during food pantry or a place for our sweet adults with disabilities from Pathways to enjoy lunch together when they come to shop.

We can't wait to have a space that is intentional...a space that says, you belong here. A place that feels welcoming, peaceful, and full of life... where conversations happen, relationships grow, and people are reminded they are seen, known, and loved.

As this space continues to come together, we're praying for the next piece of the puzzle.

We are currently looking for a builder who would feel led to bless us with a 24x20 pavilion, or a group who would like to come alongside us and fund it. This covering would allow us to serve our community in every season—rain or shine—and create an even more consistent, comfortable place for people to gather.

If that's on your heart, we would love to connect with you.

New Partner

Many of us have experienced trauma, so we understand the value of counseling. That's why we are beyond thrilled to share a new partnership with Choosing Him Ministries.

Counseling is now being offered in our community twice a month. A generous donor has already committed to covering half the cost for 2026. How beautiful is that?

